

## School Trajectory Protection System

A system utilizing **offline technology** to help identify students at risk of dropping out or leaving school.

Administrators and educational teams can take early action, implementing preventive measures to promote student retention.



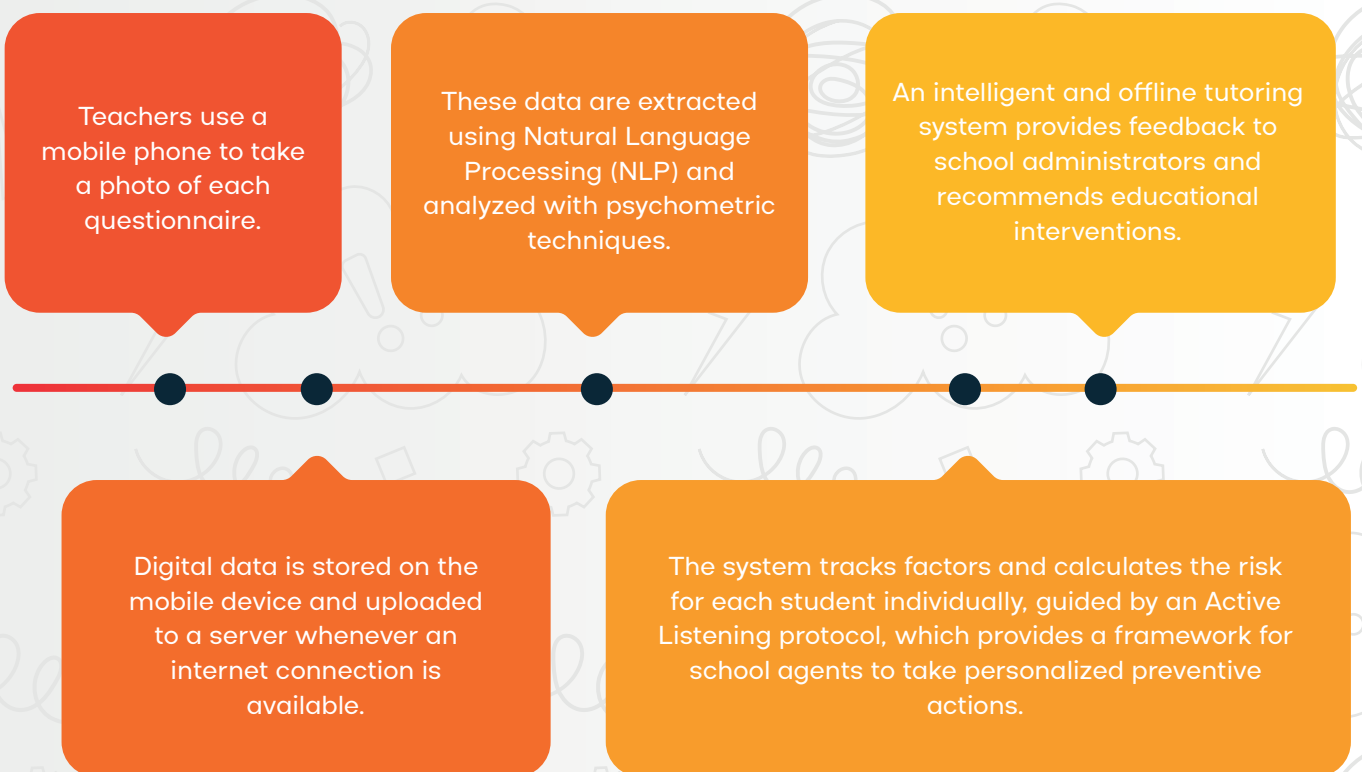
Using factors that address **five dimensions influencing student's** decisions to leave school:

- Student interactions with the school
- Relationships with educational professionals
- Family influence
- Community dynamics
- Emotional and psychological issues

Identifying these dimensions enabled the creation of a collection **questionnaire called the Relational Risk Factors for School Dropout Assessment Instrument (IAFREE)**, with questions that monitor these factors.

Paper questionnaires are **digitized by a mobile application and processed by AI algorithms**. Risk factors are **analyzed using psychometric techniques**, and **data are synthesized into a web monitoring dashboard**.

## HOW IT WORKS



## HIGHLIGHTS

**Scalable and effective** in monitoring access to education, especially in underserved and socially vulnerable areas.

**Personalization** for different realities and the ability to enter data without relying on the internet, ensuring broader solution coverage.

---

**Detailed**, evidence-based diagnosis of dropout risks, enabling precise interventions.

---

Preventive action suggestions to reduce **individual** dropout risks, based on active listening to each student.

---

**SPTe's results** demonstrate its effectiveness and positive impact on reducing school dropout rates.

## NUMBERS

*(pilot project)*



**16.470**  
STUDENTS





**2.481**  
SCHOOLS



**549**  
SCHOOL AGENTS



**NEES**  
NÚCLEO DE EXCELÊNCIA EM TECNOLOGIAS SOCIAIS

 [nees.ufal](https://www.instagram.com/nees.ufal)  
 [www.nees.ufal.br](http://www.nees.ufal.br)